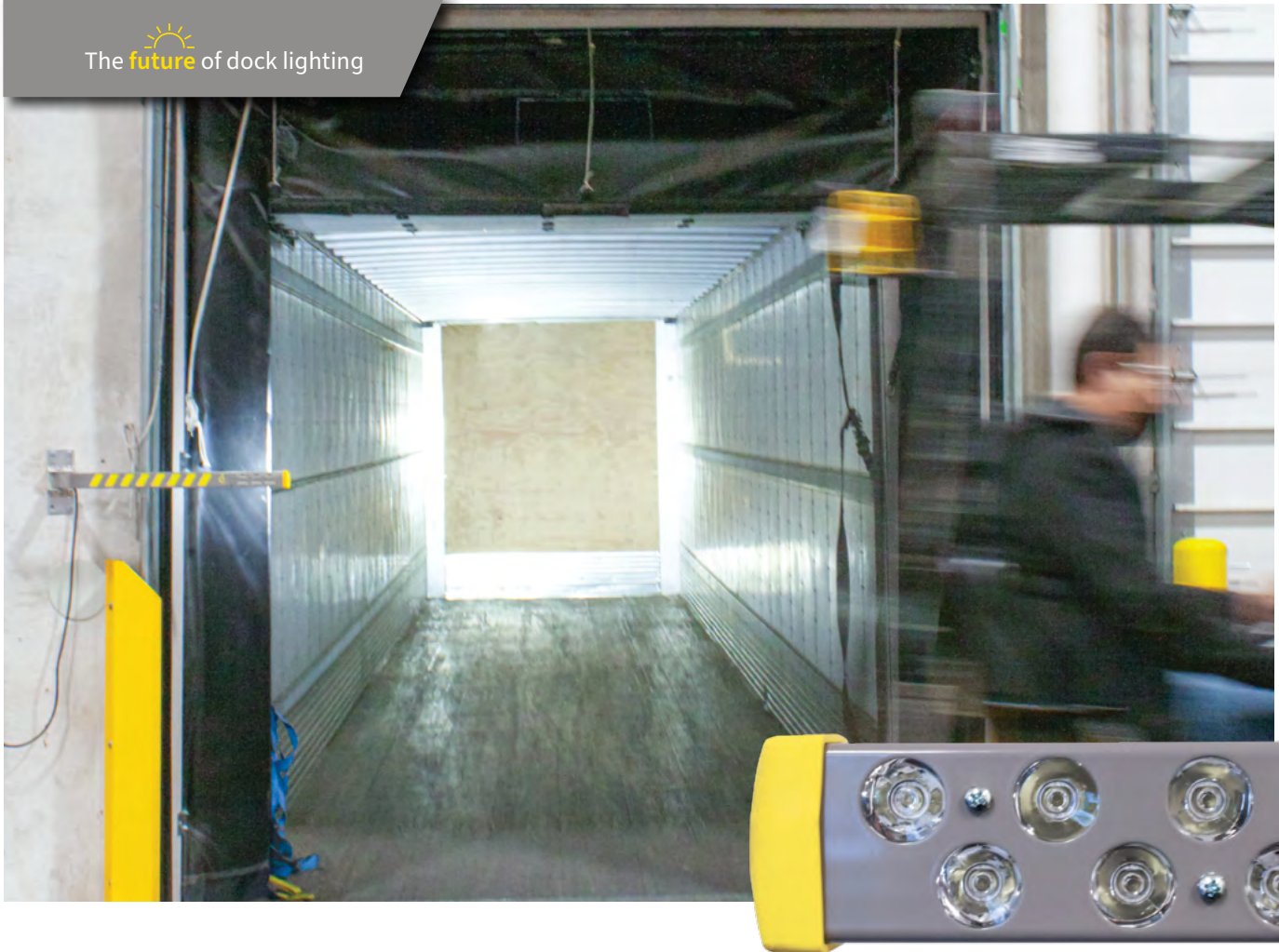


The  future of dock lighting



# DL2 Series

The Next Generation of Dock Lights



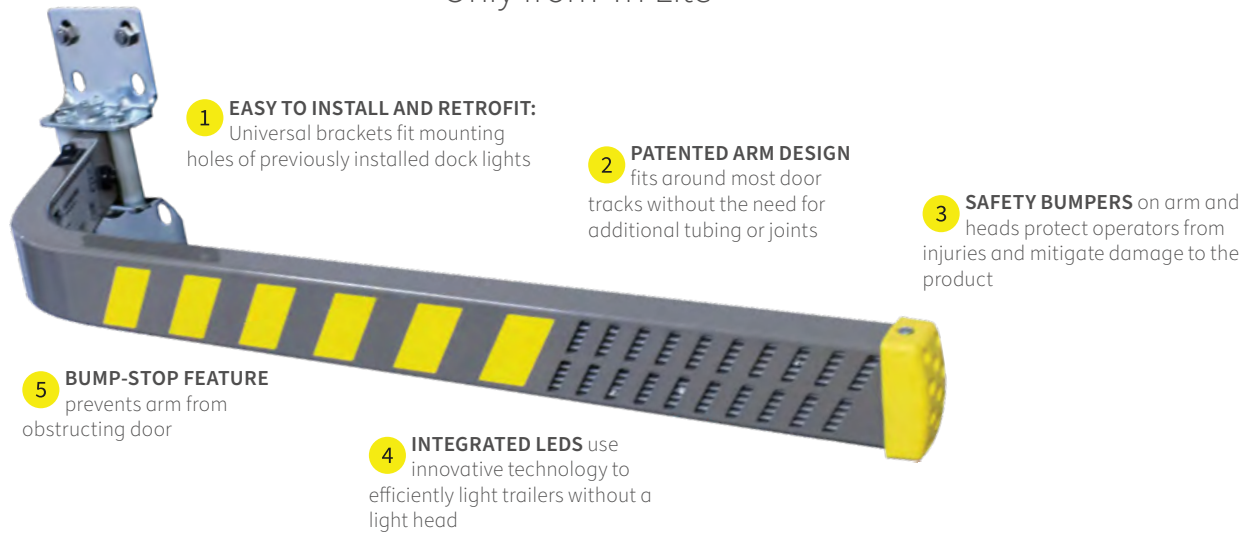
Made in USA



Patented Design

# Introducing the DL2 Series

Only from Tri Lite



## Superior Arm Design

- Our new rectangular tube design significantly increases the strength and weight capacity of any dock arm in the industry
- Patented arm design fits around virtually any door track and will not obstruct the door when it closes
- Universal bracket is designed to fit mounting holes from previous dock lights, making it easy to replace old dock lights with our new design
- Sleek, low-profile grey with safety yellow warning stripes enhance the aesthetic of standard and upgraded loading docks
- **More sizes to choose from:**
  - Single Arm length classes of 24" and 36"
  - Double Arm length classes of 40", 48" and 60"

## Integrated LED Module



- **NEW! ONLY AT TRI LITE!**
- Our patented integrated LED module is the first of its kind and our sleekest design yet
- The **Integrated LED Loading Dock Light** eliminates the need for a light head, taking up less space and creating a minimalist and modern aesthetic to loading dock stations
- Lighter weight design makes it easier and safer to move the dock arm
- No additional power cord required for light head
- Light output is equivalent to our traditional LED modules
- Patented arm design prevents the integrated LED module from overheating

# Optimized Light Heads



**Heavy Duty LED Head**  
**IP66 Rated**  
 HDL2 (no switch)  
 HDL2-S (switch)

**6 LIGHT HEADS** for non-integrated models are more compact, with improved strength and durability



**Polycarbonate LED Head**  
 PL2 (no switch)  
 PL2-S (switch)

**7 HIGH QUALITY LEDs:** All light heads and integrated models use the highest quality LEDs from leading manufacturers



**\*Three-speed Fan**  
 DLFAN

## Revolutionized Light Heads

- Your favorite Tri Lite® light heads have been optimized to accommodate the latest technology
- Our sturdiest **IP66 rated Heavy Duty LED Light Head (HDL2)** and our economical **Polycarbonate Light Head (PL2)** are now more compact, with improved strength and durability
- Light heads are now equipped with a safety bumper to protect operators from injury and mitigate damage to the product
- Uses up to **94% less energy** ⚡ than traditional incandescent heads
- 100,000 hour life expectancy in typical applications (vs. 2,000 hours for typical incandescent lights)
- 3 year warranty on all light heads
- Additional accessories, such as our three-speed fan, may also be used with DL2 arms\*



# Why DL2?

## Traditional Design

& traditional challenges



**PROBLEM:** Non-enclosed light modules can become damaged after impacts with door or machinery.



**PROBLEM:** Excessively bulky, taking up more space than necessary and can get in the way of forklift traffic.



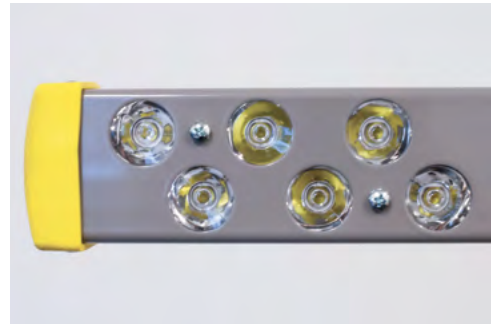
**PROBLEM:** Heavy equipment with no protection can cause injury to operators in case of head-on collision

## DL2 Series Solutions

The future of dock lighting



**SOLUTION:** All light heads are enclosed and more durable than traditional models. HDL2 is IP66 rated.



**SOLUTION:** More compact light heads combined with optimized tubing design takes up less space in highly trafficked areas.



**SOLUTION:** Safety bumpers on the end of dock arms and around light heads protect operators from injuries

# Why DL2?

## Traditional Design

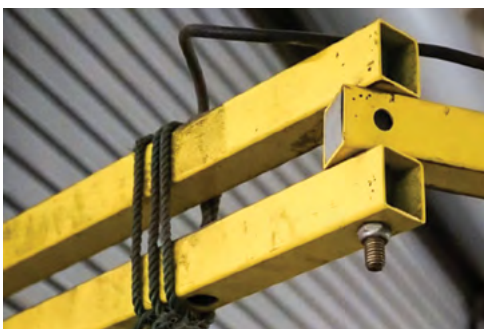
& traditional challenges



**PROBLEM:** Outdated aesthetics cause facilities to look "dated"



**PROBLEM:** Easy to close in door causing damage to door and dock light



**PROBLEM:** Prone to sagging after multiple encounters with doors or trucks

## DL2 Series Solutions

The future of dock lighting



**SOLUTION:** Modernized aesthetics look sleek and professional and now include yellow safety stripes to alert operators



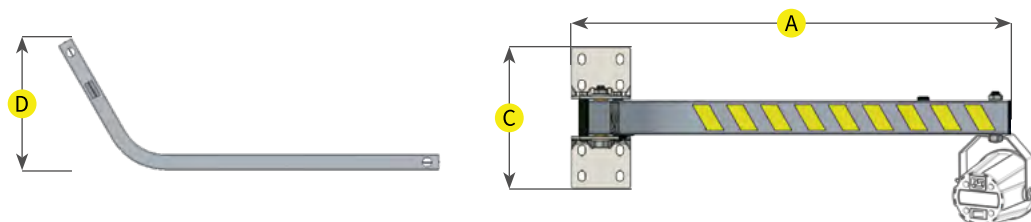
**SOLUTION:** Patented arm design and bump-stop feature prevents arm from obstructing door



**SOLUTION:** Rectangular tube design is less prone to sagging and can bear more weight compared to square design

# Loading Dock Arms

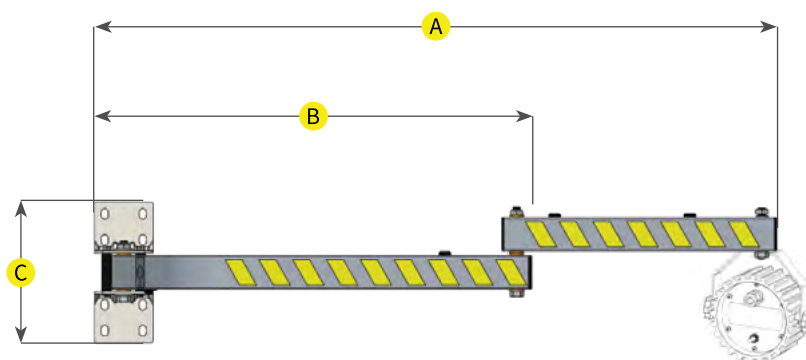
to be used with an accessory



## Single Arm

Model	A	B	C	D	Accessories*
DL2-SA-24	24 in (610 mm)	N/A	8.5 in (216 mm)	8.5 in (216 mm)	PL2, HDL2, DLFAN
DL2-SA-36	36 in (915 mm)	N/A	8.5 in (216 mm)	8.5 in (216 mm)	PL2, HDL2, DLFAN

\* Accessories sold separately. Non-integrated arms can hold accessories up to 30 lbs.



## Double Arm

Model	A	B	C	D	Accessories*
DL2-DA-40	40 in (1016 mm)	24 in (610 mm)	8.5 in (216 mm)	8.5 in (216 mm)	PL2, HDL2, DLFAN
DL2-DA-48	48 in (1219 mm)	24 in (610 mm)	8.5 in (216 mm)	8.5 in (216 mm)	PL2, HDL2, DLFAN
DL2-DA-60	60 in (1524 mm)	36 in (915 mm)	8.5 in (216 mm)	8.5 in (216 mm)	PL2, HDL2, DLFAN

\* Accessories sold separately. Non-integrated arms can hold accessories up to 30 lbs.

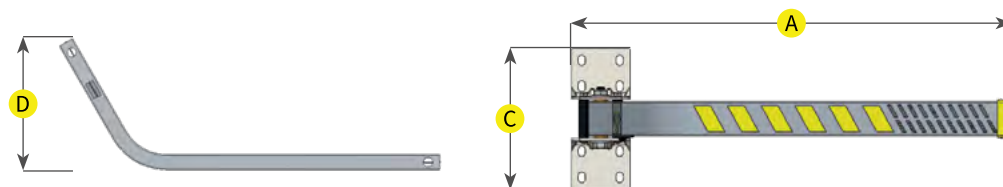
Wattage	Power Source	Lumens	Beam Angle	CRI	CCT	Life
13.4W	120V, 60 Hz	1331	10°	75	5000K	100,000 hours at 70% lumen maintenance

**Compliances:** cULus listed | IP66 Rated (HDL2) | LM79 report available upon request



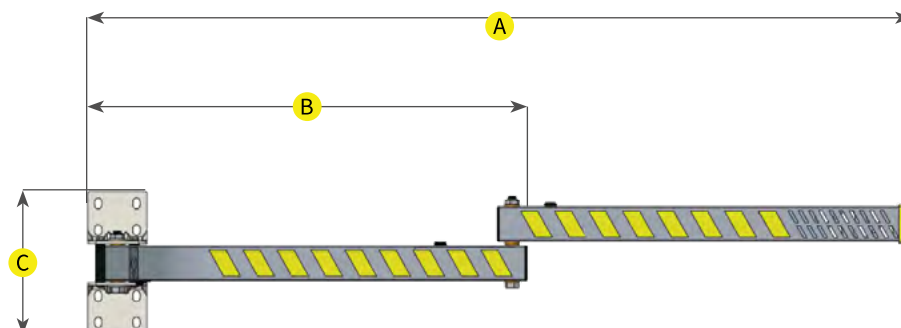
# Loading Dock Arms

with integrated LEDs



## Single Arm, Integrated

Model	A	B	C	D	Accessories
DL2-SA-IL-24	24 in (610 mm)	N/A	8.5 in (216 mm)	8.5 in (216 mm)	N/A
DL2-SA-IL-36	36 in (915 mm)	N/A	8.5 in (216 mm)	8.5 in (216 mm)	N/A



## Double Arm, Integrated

Model	A	B	C	D	Accessories
DL2-DA-IL-40	40 in (1016 mm)	24 in (610 mm)	8.5 in (216 mm)	8.5 in (216 mm)	N/A
DL2-DA-IL-48	48 in (1219 mm)	24 in (610 mm)	8.5 in (216 mm)	8.5 in (216 mm)	N/A
DL2-DA-IL-60	60 in (1524 mm)	36 in (915 mm)	8.5 in (216 mm)	8.5 in (216 mm)	N/A

Wattage	Power Source	Lumens	Beam Angle	CRI	CCT	Life
13.4W	120V, 60 Hz	1331	10°	75	5000K	100,000 hours at 70% lumen maintenance

**Compliances:** cULus listed | LM79 report available upon request







The  future of dock lighting

## Contact Us

Tri Lite (a division of Bird-X, Inc.)  
845 N Larch Ave, Suite 2  
Elmhurst, IL 60126

Phone: (773) 384-7765  
Toll-free: (800) 332-5250  
E-mail: [customerservice@triliteinc.com](mailto:customerservice@triliteinc.com)  
Web: [www.triliteinc.com](http://www.triliteinc.com)

