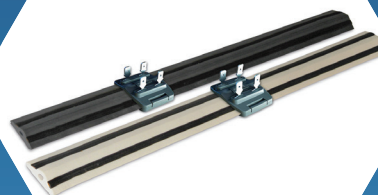
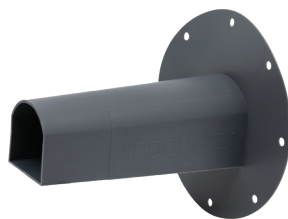


BIRD-X

INSTALLER CATALOG, VERSION 7





PCO SELECT



Every Day Bird Control Done Right



The Right Product



Same Day Shipping



Trusted Quality &
Performance

What is PCO Select?

PCO Select is a Bird-X exclusive program built on three essential pillars: The right product. Same day shipping. Trusted quality & performance. We built this program to ensure PCOs have a fast and easy experience securing the professional-grade products needed to complete jobs. At Bird-X, we understand the importance of having reliable products shipped to your job site on time, every time. This program eliminates customer pain points associated with unreliable products, incorrect orders, and long lead times.

**Contact
us to learn
more!**

How Does it Work?

PCO orders get priority. Our operations team meticulously monitors inventory to ensure we always have stock of the most commonly used products for same-day shipping.

- Designed to handle the most common projects
- Competitive pricing, reliable performance
- Over 50 essential products are in stock and available for same-day shipping via package courier (UPS, FedEx) if ordered by 12:00 PM CT or shipped the next day if ordered after 12:00 PM CT. Specialty freight carrier orders will be scheduled as per customer instructions.

Look for the  symbol throughout this catalog for items included in this program!



About Bird-X

Bird-X is the leading brand of *humane & eco-friendly* bird and wildlife control solutions worldwide—protecting human health, wildlife and the environment.

Established in 1964, our Chicago-based company manufactures a complete line of unique bird control products with an unmatched focus on quality, efficacy, and customer service.

Bird-X works closely with professional installers and pest management professionals on projects of all sizes. Ask about becoming a Bird-X Certified Installer.



▶ CONTENTS

5 Bird Netting Installation

Overview of hardware and detailed instructions to install Premium Polyethylene bird netting.

7 Bird Netting

Exclusion netting prevents pest birds from entering specific areas.

8 Netting Hardware

Commercial-grade hardware needed to install Bird-X BirdNet – cables, screws, nuts, brackets, turnbuckles, ferrules, and more.

10 Bird Spikes

Bird spikes protect surfaces from pest bird roosting and nesting. Available in Stainless Steel or Plastic and in multiple lengths, heights, and widths.

12 Avishock™, Hardware & Chargers

Avishock™ track emits a mild electric shock when touched, conditioning birds and pest rodents to stay away from treated surfaces.

14 AviAngle®

AviAngle® is a modular ledge exclusion system that prevents all pest birds and wildlife from landing on ledges.

15 Bird Wire & Post

Bird Wire prevents birds from landing on high-profile edges. Wires are installed at differing heights, making it difficult to land. It is a subtle, low-visibility product that blends into the architecture.

16 Solar Mesh Kit

Solar Mesh Kits protect the roof, electrical wiring, and solar panels from pest damage.

17 Laser Bird Control

Colored Laser Array frightens and deters birds for up to 10,000 sq. ft.

19 Gels, Liquids, and Visual Deterrents

Bird Proof Gel, liquids, taste aversions, visual deterrents, and other sensory deterrents.

20 Sonic & Ultrasonic Bird Repellers

Electronic repellers provide an effective, economical, humane bird control solution.

22 Traps & Excluders

Traps allow birds entry for capture and manual relocation. Excluders remove birds and bats from buildings and prohibit re-entry.

23 Bird Balls

Floating covers protect bodies of water from birds & other wildlife with up to 99% coverage.

LEGEND

 = Made in USA

 = Included in PCO Select



NETTING INSTALLATION ◀



Overview

Every netting project is distinct, requiring careful planning to ensure a successful installation. Before making any cuts, it's crucial to double-check all measurements to avoid costly errors. Make sure you have all the necessary tools and materials ready before beginning the installation to streamline the process and achieve optimal results.

Pro Tips:

- We offer custom-cut netting tailored to your specific needs.
- Expedited rush jobs are available to meet tight deadlines.

What You Will Need to Install Your Netting

- **Corner/Primary Attachments:** Must be the strongest component
- **Intermediate Attachments:** Should be installed every 1.5 – 2.0 feet
- **Mounting Cable**
- **Turnbuckles:** Required for every primary connection
- **Ferrules:** Copper for stainless steel cable, aluminum for galvanized cable
- **Ratchet Crimper**
- **Sharp Cutting Shears**
- **Net Rings**
- **Net Ring Tool**



Corner
Attachment



Intermediate
Attachment



Mounting
Cable



Turnbuckle



Ferrules



Ratchet Tool



Cut Tool



Net Rings



Ring Tool





▶ NETTING INSTALLATION

DETAILED INSTRUCTIONS

Corner/Primary Attachments

Corner/Primary attachments are under the most tension and must be the most robust component of the system. Ensure that all attachments are firmly anchored. A primary connection is required for every new span of netting. Install primary attachments every 45 to 50 feet for larger jobs.

- **Wood Construction:** Use galvanized/stainless steel attachments
- **Concrete Construction:** Use expanding net bolts
- **Steel Construction:** Use eye bolts and nuts

Intermediate Attachments

These tighten the mounting cable and hold it against the structure to prevent bowing and bird access. They should be installed every 1.5 to 2.0 feet, and for smaller birds, such as sparrows and swallows, we recommend every 1.5 feet. They can be used in wood or concrete structures.

Mounting Cable & Ferrules

The mounting cable frames the entire area to be sectioned off by netting. Ferrules secure the cable where it attaches to the corner attachments. Slide the ferrules onto the cable before forming your connecting loop and secure it with the ratchet tool. Use at least two ferrules per loop to ensure the strength and durability of the perimeter cable.

Turnbuckles

Turnbuckles must be well-anchored as they are subject to a great deal of tension between the cable and the corner attachments.

Ensure your components are well secured. When installing, make sure the turnbuckles are all the way open. Pull the cable as tight as possible through the turnbuckle. Before tightening, remove all slack in the cable, take up as much tension as possible, and fasten with a screwdriver. **Caution:** Do not overtighten turnbuckles, which may result in fasteners or eyehooks pulling out. Use four ferrules for every length of cable.

Net Rings

Net rings attach the netting to the cable. Using the ring tool, secure one ring per square of netting. Net rings can also connect netting seams. Be sure to overlap the netting at the seams by at least six inches.

Attaching the Netting

Begin working from one side, making your way to the other. Do not attempt to meet in the middle while attaching netting. Start in one corner and attach the netting horizontally using the net rings. Once you have a few feet in place, return to the corner and begin securing a few feet vertically to establish a strong corner. After finishing the top and side, you can complete the remaining sides. Once the netting is attached, inspect the cable for bowing or large gaps. If any inconsistencies exist, carefully tighten your turnbuckles to close any gaps.

Additional Information





This is a general overview of Bird-X PE Bird Net Installation. Complicated projects may require additional materials and instruction. If you need more information, please review the videos at Bird-X.com and call your Bird-X representative for further assistance.

PREMIUM BIRDNET

This polyethylene netting is a permanent solution, ideal for commercial projects. The material is lightweight, pliable, maintenance-free, and durable. 10-year warranty. Custom cut netting is available! Call to inquire!

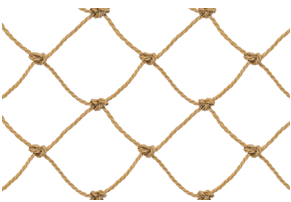


3/4" Black Polyethylene Knotted Net

25'x25'.....625 sq. ft.....[NET-PE-25-25](#) 
 25'x50'.....1,250 sq. ft.....[NET-PE-25-50](#) 
 50'x50'.....2,500 sq. ft.....[NET-PE-50-50](#) 
 50'x100'.....5,000 sq. ft.....[NET-PE-50-100](#) 
 100'x100'...10,000 sq. ft.....[NET-PE-100-100](#)
 100'x200'...20,000 sq. ft.....[NET-PE-100-200](#)

2" Black Polyethylene Knotted Net

25'x25'.....625 sq. ft.....[NET-PE-25-25-2](#)
 25'x50'.....1,250 sq. ft.....[NET-PE-25-50-2](#)
 50'x50'.....2,500 sq. ft.....[NET-PE-50-50-2](#)
 50'x100'.....5,000 sq. ft.....[NET-PE-50-100-2](#)
 100'x100'...10,000 sq. ft.....[NET-PE-100-100-2](#)



3/4" Stone Polyethylene Knotted Net

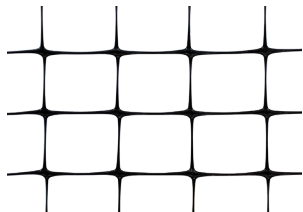
25'x25'.....625 sq. ft.....[NET-PE-25-25-STONE](#)
 25'x50'.....1,250 sq. ft.....[NET-PE-25-50-STONE](#)
 50'x50'.....2,500 sq. ft.....[NET-PE-50-50-STONE](#)
 50'x100'.....5,000 sq. ft.....[NET-PE-50-100-STONE](#)

1 1/8" Black Polyethylene Knotted Net


25'x25'.....625 sq. ft.....[NET-PE-25-25-1](#)
 25'x50'.....1,250 sq. ft.....[NET-PE-25-50-1](#)
 50'x50'.....2,500 sq. ft.....[NET-PE-50-50-1](#)
 50'x100'.....5,000 sq. ft.....[NET-PE-50-100-1](#)

STRUCTURAL BIRDNET

This 1/2" standard mesh netting is a great economical solution for homeowners and gardeners. It is lightweight, pliable and weatherproof.

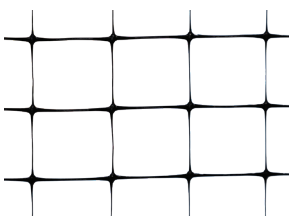


1/2" Black Polypropylene Net

100'x14'.....1,400 sq. ft.....[NET-STR-100](#) 
 200'x14'.....2,800 sq. ft.....[NET-STR-200](#)

STANDARD BIRDNET

This 3/4" polypropylene is perfect for small businesses, homeowners, farmers, and gardeners. It is durable, plastic netting that is lightweight, pliable, and resistant to elemental damage. Lasts up to 5 years.



3/4" Black Polypropylene Net

100'x14'.....1,400 sq. ft.....[NET-STD-100-14](#) 
 200'x14'.....2,800 sq. ft.....[NET-STD-200-14](#)



▶ NETTING HARDWARE

Mounting Cable

500' Spool of 304 Marine Grade Stainless Steel braided wire. $\frac{3}{32}$ " (2mm) diameter with 920 lb. tensile. Stainless Steel or Galvanized options.

$\frac{3}{32}$ " **Stainless Steel**
MTG-CABLE-SS

$\frac{3}{32}$ " **Galvanized**
MTG-CABLE

$\frac{1}{16}$ " **Stainless Steel**
MTG-CABLE-SS-1/16

$\frac{1}{8}$ " **Stainless Steel**
MTG-CABLE-SS-1/8



Eyebolt Anchor

Corner/end attachment. M6 high load bearing expansion bolt anchor. For most masonry, stone, or concrete. This M6 net bolt needs a 14mm drill bit. Stainless Steel or Galvanized options. 10 pieces per pack.

Stainless Steel
MTG-NETBOLT-MD-SS



Screw Eye

For wood or thick sheet metal surfaces. Corner/end attachment. $\frac{17}{32}$ " I.D., 1" lag thread. Stainless Steel. 20 pieces per pack.

MTG-SCREW-MD-SS



Eyebolt w/Nut

Corner/end attachment for an I-beam or other thick metal. Stainless Steel. 10 pieces per pack.

MTG-BOLT-MD-SS



Lag Eye Screw

$\frac{1}{2}$ " lag eye screw. Stainless Steel. 100 pieces per pack.

MTG-LAG-SCREW-SS



Net Concrete Spikes

This hammer-in attachment can be used for stone, concrete or solid brick. It does not require a plastic anchor sleeve; the bent shaft holds it securely in place. Stainless Steel or Galvanized options. 100 pieces per pack.

Stainless Steel
MTG-SPIKES-SS

Galvanized
MTG-SPIKES



Heavy Duty Steel Clamp

The heavy-duty steel clamp can hold up to 630 pounds of tension weight. Bolt to an I-beam or other steel structure and run your cable inside the jaws. Opens up to $\frac{3}{4}$ ". Stainless steel. 10 pieces per pack.

1" Clamp
MTG-CLAMP-1-SS

2" Clamp
MTG-CLAMP-2-SS



Girder Clip

This strong, hammer-on clip lets you attach cable to hard-to-drill steel beams. Hammer the clip into the edge of an I-beam with the cable running through the jaws (not through the hole), and your cable is secure. Stainless Steel or Galvanized options. 100 pieces per pack.

Stainless Steel

$\frac{1}{8}$ " – $\frac{1}{4}$ "

MTG-GIRD-1-SS

$\frac{5}{16}$ " – $\frac{1}{2}$ "

MTG-GIRD-2-SS

$\frac{3}{4}$ " – 1"

MTG-GIRD-5-SS

Galvanized

$\frac{1}{8}$ " – $\frac{1}{4}$ "

MTG-GIRD-1

$\frac{5}{16}$ " – $\frac{1}{2}$ "

MTG-GIRD-2

$\frac{3}{4}$ " – $\frac{1}{2}$ "

MTG-GIRD-4

$\frac{3}{4}$ " – 1"

MTG-GIRD-5



Bracket with Hilti Pin

Used as a corner or intermediate attachment or as a quick-release cable holder.

MTG-BRACKET-HILTI PIN



Multi-Purpose Cable Bracket

The $\frac{1}{4}$ " bracket is used as an end or intermediate bracket and can be installed as either a permanent fixture or a quick-release cable holder. Stainless Steel. 100 pieces per pack.

MTG-BRACKET-SS



Mounting Clips

Install Bird-X netting easily. Heavy-duty clips snap onto netting edges and hold securely.

Installs easily with screws, nails, adhesive, cable, or Velcro. 250 pieces per pack.

MTG-CASE



NETTING HARDWARE

Turnbuckles

Hook-and-Eye Turnbuckles for tensioning Net Cable. Stainless Steel or Galvanized options. 10 per pack.



Stainless Steel

Small

4 5/8" – 6 3/4" L x 1/2" W

MTG-TURN-SM-SS

Medium

5 3/4" – 8 1/2" L x 5/8" W

MTG-TURN-MD-SS

Large

7 3/4" – 11" L x 3/4" W

MTG-TURN-LG-SS

Galvanized

Small

4" – 5 7/8" L x 5/8" W

MTG-TURN-SM

Large

6 1/2" – 9 1/2" L x 7/8" W

MTG-TURN-LG

Net Access Clip

Connect pieces of netting together securely with stainless steel clips.

3/4" Stainless Steel (100 pack)

MTG-ACCESS-CLIP

2" Stainless Steel (100 pack)

MTG-ACCESS-CLIP2



Net Zipper

UV-resistant black zipper. Fasten to netting with net rings and ring tool.

1' Black, 5MM

3' Black, 5MM

MTG-ZIPPER-1

MTG-ZIPPER3

6' Black, 5MM

MTG-ZIPPER



Ferrules, 2.5MM

Double-sleeve zinc/Copper Ferrules. Ferrules are used to reinforce joints and bind cable together. A Ratchet Crimper is required. Two ferrules are required per cable connection. 100 per pack.

Copper

MTG-FERR-C

Aluminum

MTG-FERR



Net Ratchet Crimp Tool

Manual operated, ratcheting Crimper for ferrules.

MTG-RATCHET



Cut Tool

Used to cut the mounting cable.

MTG-CUT-TOOL



Net Ring Tool

Manually operated, auto-feed Ring Tool. Installs net rings around net, cable and zippers.

MTG-RING-TOOL



Net Rings

Ring Tool required. Net rings secure seams and fasten the netting to the cable and zippers. 2,500 per pack.

Stainless Steel

MTG-RINGS-SS

Galvanized

MTG-RINGS



Pneumatic Ring Tool

16-gauge 3/4" C-Ring. Magazine capacity of 125.

MTG-PN-RINGTOOL-3/4

MTG-PN-RINGTOOL-1/2

MTG-PN-RINGTOOL-1



Pneumatic Tool Net Rings

Pneumatic tool net rings secure seams and fasten the netting to the cable and zippers. A Pneumatic Ring Tool is required. Black rings are custom made with a two-week lead time.

3/4" (11,000 pack)

MTG-PN-RINGS-3/4

MTG-PN-RINGS-3/4-SS

1/2" (10,000 pack)

MTG-PN-RINGS-1/2

MTG-PN-RINGS-1/2-SS

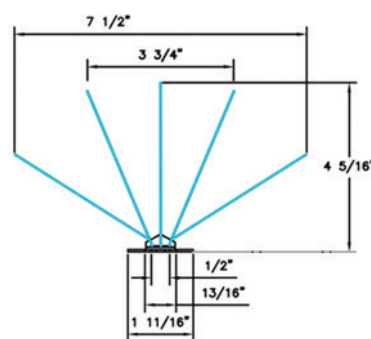
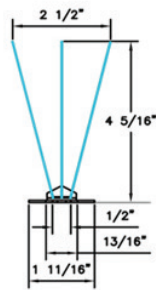


▶ STAINLESS STEEL BIRD SPIKES



Narrow Bird Spikes

Top width: 2.5"
Base width: 0.5"
Highest point: 4.3"
10 ft.....**SLS-10**
24 ft.....**SLS-24**
50 ft.....**SLS-50**
100 ft.....**SLS-100** 🦅

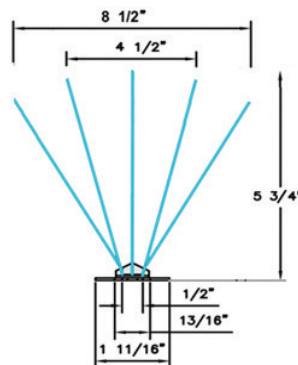
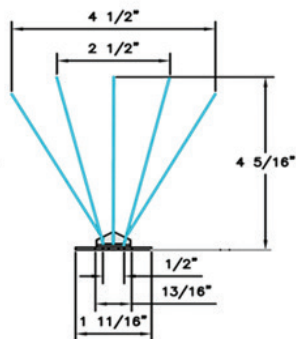


Extra Wide Bird Spikes

Top width: 7.5"
Base width: 0.5"
Highest point: 4.3"
10 ft.....**EWS-10** 🦅
24 ft.....**EWS-24**
50 ft.....**EWS-50** 🦅
100 ft.....**EWS-100** 🦅

Standard Bird Spikes

Top width: 4.5"
Base width: 0.5"
Highest point: 4.3"
10 ft.....**STS-10** 🦅
24 ft.....**STS-24** 🦅
50 ft.....**STS-50** 🦅
100 ft.....**STS-100** 🦅



Extra Tall Bird Spikes

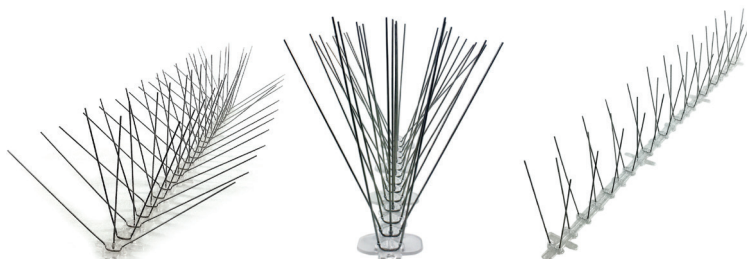
Top width: 8.5"
Base width: 0.5"
Highest point: 5.75"
98 ft.....**ETS-98**

Spikes Special Adhesive 🇺🇸

Designed for installing Bird-X Spikes. One tube adheres 15-20 feet of spikes.

10.5 oz. tube

SSA 🦅

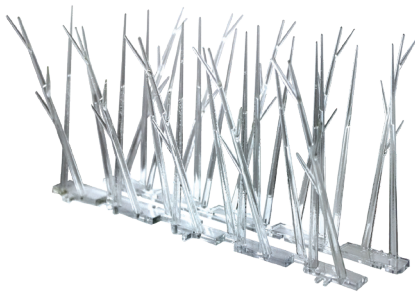


PLASTIC BIRD SPIKES ◀



Narrow Bird Spikes 🇺🇸

Top width: 2.5"
Base width: 0.75"
Highest point: 4.75"
10 ft.....**SP-10-N**
25 ft.....**SP-25-N**
50 ft.....**SP-50-N**
100 ft.. ...**SP-100-N**



Standard Bird Spikes 🇺🇸

Top width: 4.5"
Base width: 1.75"
Highest point: 4.75"
10 ft.....**SP-10** 🇺🇸
25 ft.....**SP-25** 🇺🇸
50 ft.....**SP-50**
100 ft.....**SP-100** 🇺🇸



Spikes Special Adhesive 🇺🇸

Designed for installing Bird-X Bird Spikes. One (1) tube adheres 15-20 feet of spikes. Weatherproof. Works on vinyl, wood, brick, stone, concrete, and metal surfaces.

10.5 oz. tube

SSA 🇺🇸



► SHOCK TRACK & HARDWARE



AVISHOCK™ TRACK

AVISHOCK™ Track has a sleek, low-profile design that seamlessly integrates with building aesthetics, making it an ideal choice for preserving the visual appeal of structures. Its innovative design requires fewer energizers and power sources, simplifying installation and reducing overall material costs. Encased copper strips ensure durability in all weather conditions, providing reliable long-term performance thanks to UV and weather-resistant materials.

Favored by project owners, architects, and installers, AVISHOCK™ Track is the preferred solution when aesthetics are crucial. It is extensively used on heritage sites and modern building designs.

Black

SHK102 



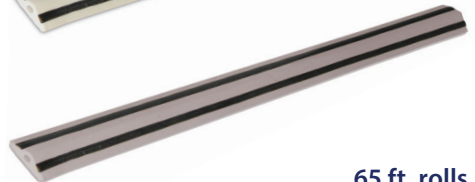
Stone

SHK101 



Grey

SHK105

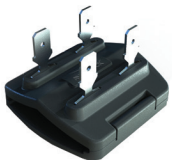


65 ft. rolls



Straight Connector (x20)

SHK121 



Corner Connector (x20)

SHK122 



Jumper (x20)

SHK123 



Female Spade Connectors (x100)

SHK023-100 



Male Spade Connectors (x100)

SHK029-100



Connector Ring Terminal (x10)

SHK024 



SHOCK TRACK & HARDWARE

Digital Voltage Tester

Used to test that the track is powered. Tester reads in 100v increments up to 10,000. Put one probe to one track braid and the other to the second track braid. The reading should be between 5,000v and 9,000v (5.0 - 9.0kV)

SHK051

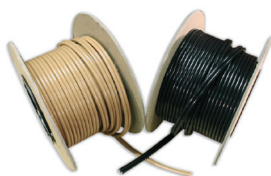


Lead Wire (65')

Heavily insulated, twisted copper is easy to cut, strip and crimp. Used for connecting track to track to energizer.

Brown: SHK111

Black: SHK112



Solar Charger

Powers 300-2,500 ft. of track
Solar-powered charger with weather-resistant case.

SHK-C-SOL



110V AC Charger

Powers 300-1,000 ft. of track

SHK-C-110



12V Battery Charger

Powers 300-2,500 ft. of track

SHK-C-12V



Avishock™ Shears

Ideal for cutting Avishock™ track and lead wire.

SHK136



Connector Crimp Tool

Used to crimp the Connectors to the Lead Wire.

SHK052



Wire Stripping Tool

Used to strip the insulation from the Lead Wire.

SHK053



Avishock™ 45° Cutting Guide

Ensure quick and accurate miter cutting. Simply line up against the track and cut along the edge.

SHK054



Special Adhesive

Adhesive is weatherproof and works on vinyl, wood, brick, stone, concrete, and metal surfaces.

10.5 oz. tube

SSA



Drainage Tubes (100 pack)

To be used where water pooling is a risk. Apply enough tubes to allow drainage (e.g., 2 tubes every 1 ft.).

SHK130



Warning Plates

Hard-wearing plastic. 25 per pack.

SHK032



Warning Stickers

100 per roll.

SHK033





AVIANGLE®

AviAngle® is a modular ledge exclusion system that prevents all pest birds and wildlife from landing on ledge-based areas. The smooth surface of the UV-protected PVC material prohibits birds from landing and getting a stable foothold. AviAngle® is resistant to virtually all-weather conditions and harsh environments when installed according to manufacturer instructions.

AviAngle® can be installed using Bird-X Special Adhesive, wood screws, nails or clamps, depending on the surface area and the application. AviAngle® Base Unit will cover approximately 6" of ledge depth, comes in four (4') linear foot sections, and is packaged in 12 sections per box for a total of 18 linear feet per box.

AviAngle® Base (48')

AA-BASE

AviAngle® Endcaps (10 pack)

Small (6")

Large (12")

AA-CAP-S

AA-CAP-L

AviAngle® Endcap Clips (10 pack)

Small (8")

Large (14")

AA-CLIP-S

AA-CLIP-L

AviAngle® Extenders (48')

Mid-Extender

Top-Extender

AA-E-M

AA-E-T

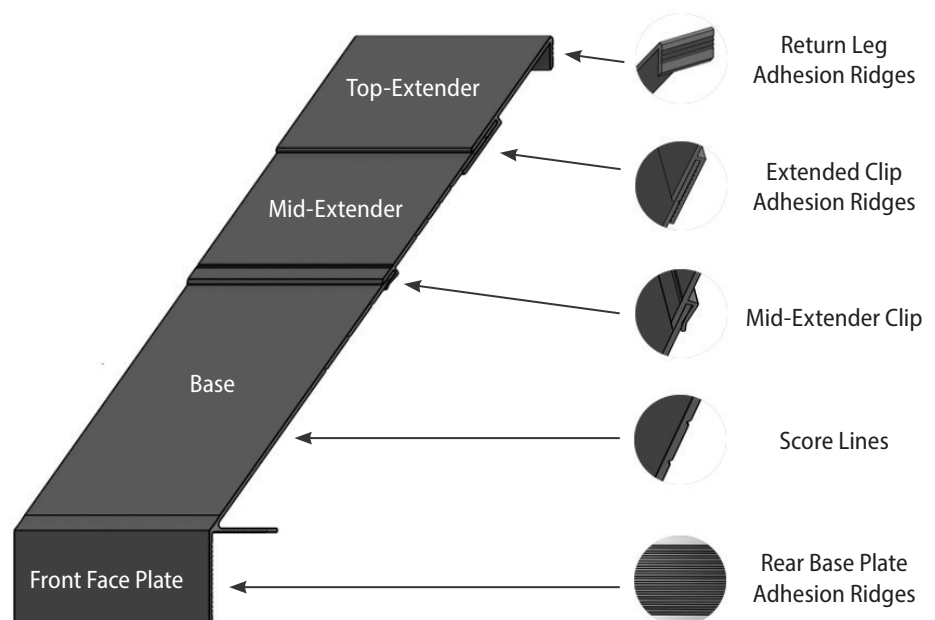
AviAngle® Joinders (10 pack)

Small (8")

Large (14")

AA-J-S

AA-J-L



BIRD WIRE & POST PRODUCTS

Bird Wire Cable

Stainless steel wire. 1 x 7 nylon-coated, UV-stabilized. Diameter is 0.7mm.

250' Wire

BW-WIRE-250

1,000' Wire

BW-WIRE-1K

500' Wire

BW-WIRE 



Glue-On Bases (10 pack)

Bases can be glued or screwed to surfaces. Posts are inserted in bases.

Black Base

BW-BASE-BLACK

Grey Base

BW-BASE 

Tan Base

BW-BASE-TAN



Standard Springs (100 pack)

Easily attach Bird Wire to posts.

BW-SPRING 



Micro Springs (100 pack)

Easily attach Bird Wire to posts.

BW-SPRING-M



Crimps (100 pack)

Attach Bird Wire to posts by threading it through nickel-plated copper crimps.

BW-CRIMP 



Crimp Tool

Used to attach crimps to bird wire cable. Carbon steel with plastic coated handle. 130 mm. Mouth opens to 21 mm.

BW-TOOL



Bird Wire Rivets

Plastic fasteners for bird wire and post system. 100 pieces per pack.

1"

BW-RIVET 

1.5"

BW-RIVET-1.5



Posts (100 pack)

Stainless Steel Posts have flattened heads with hole for wire.

3.5" Posts

BW-POST-3.5 

5" Posts

BW-POST-5

6" Posts

BW-POST-6

4.5" Posts

BW-POST-4.5

5" Posts (2 holes)

BW-POST-5-2



Railing Clamps (10 pack)

Use to attach wire to round surfaces, such as pipes and posts.

1" Diameter

BW-CLAMP-1

3" Diameter

BW-CLAMP-3

4" Diameter (2 posts)

BW-CLAMP-4-2

2" Diameter

BW-CLAMP-2 

4" Diameter

BW-CLAMP-4

6" Diameter (2 posts)

BW-CLAMP-6-2



Triangular Ridge Bracket

Used to run bird wire along roof ridges.

Flexible base fits any angle or roof fridge.

Includes three 3.5" posts.

BW-BRACKET-TRI 



Vertical Post & Wire Clamp

Stainless Steel Clamp used to install birdwire post to gutter bead, metal roof, or other vertical surfaces. 10 per pack.

3.5" x 0.16"

BW-CLAMP-V



Horizontal Post & Wire Clamp

Stainless Steel Clamp used to install bird wire post to an I-beam or other horizontal steel surface. 10 per pack.

3.5" x 0.16"

BW-CLAMP-H 



▶ SOLAR MESH KIT



SOLAR MESH KIT

Our solar mesh exclusion system secures around the perimeter of solar panels to exclude birds and animals from getting underneath the panel. The mesh is made of stainless steel welded into ½" squares and coated in thick, protective PVC coating that is resistant to UV degradation and chemical corrosion. Three options for panel clips include stainless steel or UV-protected nylon. Panel clips secure mesh without damaging or voiding the panel warranty. Solar mesh can be mounted to any solar panel with a bracket depth of greater than 30 mm.



Solar Kit

100 ft. of 8" mesh and 100 nylon fastening clips

SOLAR KIT-P-P-8

100 ft. of 6" mesh and 100 nylon fastening clips

SOLAR KIT-P-P-6

100 ft. of 4" mesh and 100 nylon fastening clips

SOLAR KIT-P-P-4

100 ft. of 8" mesh and 100 metal fastening clips

SOLAR KIT-P-M-8

100 ft. of 6" mesh and 100 metal fastening clips

SOLAR KIT-P-M-6

100 ft. of 4" mesh and 100 metal fastening clips

SOLAR KIT-P-M-4

Solar Mesh

Material: 302 stainless steel

Length: 100 ft.

Wire gauge: 0.7 mm

PVC thickness: 0.3 mm

Grid: ½" squares

8" Width

SOLAR MESH-P-8

6" Width

SOLAR MESH-P-6

4" Width

SOLAR MESH-P-4



Nylon Fastening Clips

Material: UV protected nylon

Length: 123 mm

Clip depth: 29 mm

Width: 10 mm

Count: 100 pieces

SOLAR CLIP



Metal Fastening Clips

Material: Stainless steel

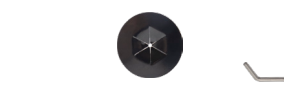
Length: 120 mm

Clip depth: 20 mm

Material thickness: 1.8mm

Count: 100 pieces

SOLAR CLIP-M



Speed Clips

Material: UV stabilized polycarbonate

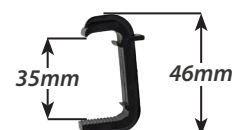
Count: 100 pieces

30 mm

SOLAR CLIP-SP-30

35 mm

SOLAR CLIP-SP-35



LASER BIRD CONTROL ◀

Indoor Laser

Bird-X Indoor Laser

Bird-X Indoor Fat Beam Laser flashes with disorienting red and green lights that deter birds from the area. Class 3R "Fat Beam" laser diodes create multiple random patterns that prevent birds from acclimating. The indoor laser comes ready to mount with the included bracket. Includes remote control with timer options and power cord.

BX-LASER-IN



Indoor Laser Specs

- **Laser Color:** Red, Green
- **Beam Divergence:** 60°
- **Optical Power:** 50 – 100 mW
- **Laser Class:** 3R Fat Beam
- **Voltage:** 100V to 240V, 50-60 Hz
- **Power Consumption:** 50W
- **Housing:** Aluminum
- **Coverage:** Up to 10,000 sq. ft.
- **Dimensions:** 7.4" x 5.7" x 4.5"
- **Weight:** 3.31 lbs.

Bird-X Handheld Laser

Bird-X Handheld Fat Beam Laser is an immediate response tool for all types of bird jobs. The unit is compact, lightweight, easy to operate and effective. With a simple point-and-shoot mechanism, birds instantly recognize the laser beam as an imminent physical threat, prompting them to leave the area.

BX-LASER-HH-FB



Handheld Laser Specs

- **Laser Color:** Green
- **Beam Divergence:** 15°
- **Optical Power:** <50 mW
- **Laser Class:** 3B
- **Power Consumption:** 1.5W
- **Housing:** Plastic
- **Coverage:** Up to 1,200 ft.
- **Dimensions:** 4.75" x 3.5" x 1"
- **Weight:** 0.55 lbs.



▶ LASER BIRD CONTROL



Bird-X Outdoor Laser

The ultimate solution to protect outdoor spaces from pest birds, our Class 2 laser bird repellent uses red and green multiple light patterns to effectively chase away birds from areas up to 1,000 sq. ft. Designed with advanced features, it ensures efficient and long-lasting bird deterrence. The Bird-X Outdoor Laser includes a base for easy installation and remote control with timer options and power cord.

BX-LASER-OUT



Outdoor Laser Specs

- **Laser Color:** Red, Green
- **Beam Divergence:** 60°
- **Optical Power:** 50 – 100 mW
- **Laser Class:** 2
- **Voltage:** 100V to 240V, 50-60 Hz
- **Power Consumption:** 12W
- **Housing:** Aluminum
- **IP Rating:** IP65
- **Coverage:** Up to 1,000 sq. ft.
- **Dimensions:** 7" x 7" x 6"
- **Weight:** 3.31 lbs.

Bird-X Outdoor Laser II

Bird-X Outdoor Laser II Bird Repellent laser is a powerful and effective solution for deterring pest birds from various outdoor spaces, utilizing a safe but powerful Class 3R laser that emits red and green multiple light patterns that effectively chase away birds from areas up to 4,000 sq. ft. The laser's advanced features ensure optimal performance and prevent habituation.

BX-LASER2-OUT



Outdoor Laser II Specs

- **Laser Color:** Red, Green
- **Beam Divergence:** 60°
- **Optical Power:** 50 – 100 mW
- **Laser Class:** 3R
- **Voltage:** 100V to 240V, 50-60 Hz
- **Housing:** Aluminum
- **IP Rating:** IP65
- **Coverage:** Up to 4,000 sq. ft.
- **Dimensions:** 10.2" x 7" x 9"
- **Weight:** 6.61 lbs.



GELS, LIQUIDS, AND VISUAL DETERRENTS

Bird Deflector

Uses sunlight and wind to create flashing lights during daylight hours to deter seagulls and other migratory birds. It can be screwed or glued into place. Equipped with an adjustable angle arm for multiple positions.

Aluminum and plastic design

BD



Optical Gel

Optical Gel is a multi-sensory bird repellent that deters birds using sight, smell and touch. All natural & eco-friendly. Easy installation. Lasts for up to 4 years when installed according to manufacturer specifications.



24 Pack

BP-CUP-OG

24 Pack (Magnetic Base)

BP-CUP-OG-MAG

200 Pack

BP-CUP-OG-200

Bird Proof Gel

Surface Repellent Gel; tacky substance keeps birds off surfaces. Discreet and low-profile, perfect for signs and entrances.

12 tubes per case

BP-CART 



4 The Birds: Repellent Liquid

Transparent, sticky liquid makes surfaces tacky and uncomfortable to birds.

Gallon

BP-LIQ-1



Bird Stop

Taste aversion, liquid bird deterrent with a smell and taste that birds avoid.

Gallon

BS-GAL



Safety Solvent Cleaner

Safely cleans and removes Bird Proof Liquid and/or Gel from surfaces.

Gallon

BPS-GAL



Daddi Long Legs

Thin, stainless-steel rods constantly move to interfere with birds' wings when they attempt to land. Design is unobtrusive and practically invisible from a distance.

DLL-2

DLL-4

DLL-6

DLL-8



Evo Blend Cleaner

The Evo Blend Microbial Bird Dropping Cleaner's formulation safely and effectively breaks down bird waste build-up for easy removal. Evo Blend consists of non-harmful surfactants and probiotic microbes that are specifically bred to target urine and fecal material.

1 Gallon

BX-EVO



▶ SONIC & ULTRASONIC DETERRENTS

Super BirdXPeller PRO

These units cover areas up to 6 acres.

Version 1 repels: Pigeons, Starlings, Sparrows, & Gulls

SBXP-PRO-1

Version 2 repels: Crows, Blackbirds, Grackles, Cormorants, & Ravens

SBXP-PRO-2

Version WP repels: Woodpeckers & Sparrows

SBXP-PRO-WP



BroadBand PRO

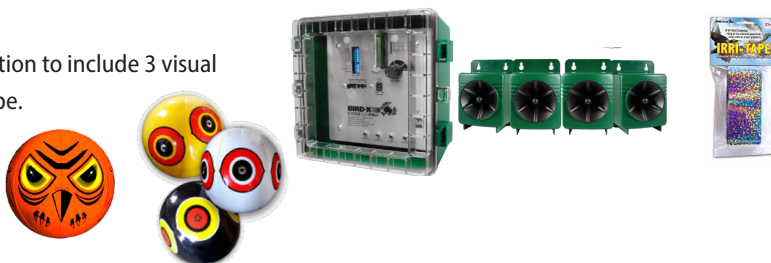
Both Sonic & Ultrasonic Bird Repeller. Covers up to 6 acres. Option to include 3 visual scares – Scare Eye Balloons (3 pack), Terror Eyes, and 25' IrriTape.

With Visual Scares

BB-PRO

Without Visual Scares

BB-PRO-B



GooseBuster

Sonic Goose Control Device uses authentic recordings of Canada geese alarm and alert sounds to deter geese. Covers up to 7 acres.

4-speakers

GB

1 speaker

GB-1



Ultrason X

Ultrasonic Bird Repellers are simple to install, extremely low-profile, & highly effective. Repel pest birds discreetly & permanently using silent-to-humans ultrasonic sound waves. Ultrasonic technology is irritating & disorienting to birds, but remains a safe, humane & eco-friendly option. These units cover areas up to 3,600 sq. ft.

USX



Solar Panel

Solar Panel converts sunlight into electricity and charges 12v batteries for DC (direct current) appliances. Works with Bird-X sonic devices.

5W

SOLPAN

25W

SOLPAN2



SONIC & ULTRASONIC DETERRENTS ◀



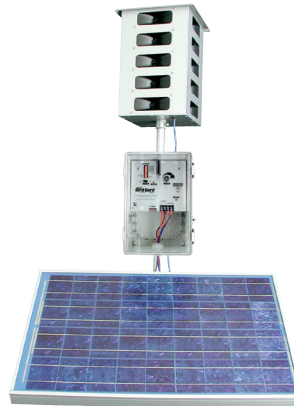
ASK ABOUT OUR AIRPORT BIRD CONTROL SYSTEM



Mega Blaster PRO

Our most powerful sonic system features two high-output amplifiers that drive our specially designed 20-speaker tower. Solid-state electronics are mounted inside a NEMA-type control box, which is suitable for almost any large outdoor application. The intense sound output covers up to 25 acres, broadcasting distress calls at up to 125 decibels that frighten birds away for good.

MEGA



QuadBlaster QB-4

The QuadBlaster QB-4 is an indoor ultrasonic bird control system composed of 4 built in speakers and solid steel construction. An optional powerful flashing strobe light add-on creates a multi-sensory attack to frighten pests away from the area. The QB-4 covers up to 6,500 sq. ft. in enclosed or semi-enclosed areas.

QB-4 only

QB4

QB-4 + Strobe

QB4+S



▶ TRAPS & EXCLUDERS

Pigeon Traps

Shade, water & feed container included:

35" x 16" x 8"

PT3516/S/W/F

36" x 24" x 10"

PT 3624 SWF

Shade included:

35" x 16" x 8"

PT3516/S

Trap only:

35" x 16" x 8"

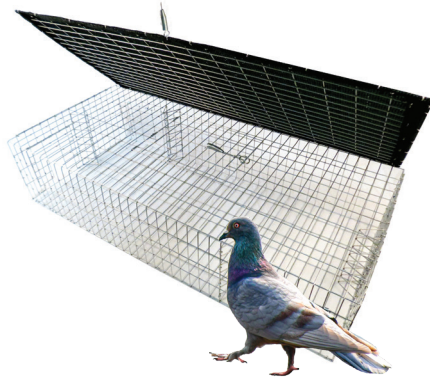
PT3516

Collapsible to 1"

high:

24" x 12" x 8"

PT2412/KD



Sparrow Traps

Trap only

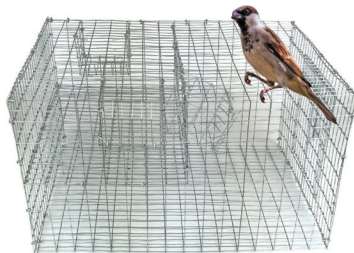
16" x 12" x 6"

PT-SP2

Water & feed container included

36" x 24" x 10"

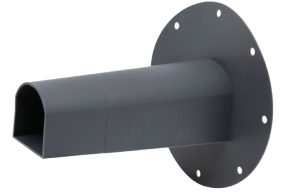
PT-SP3/W/F



BirdChute™

The BirdChute™ One Way Door humanely removes sparrows, starlings, and similar sized birds from dryer vents, soffits, chimneys, and various nesting areas. Made of durable polypropylene. 7" x 6.5" x 6.5".

CHUTE-BIRD



BatChute™

The BatChute™ One Way Door humanely removes bats from attics, soffits, chimneys, and other roosting areas without returning. Made of durable polypropylene. 7" x 6.5" x 5".

CHUTE-BAT





UP TO 99% SURFACE COVERAGE

BIRD BALLS

Bird balls are floating bird and wildlife deterrents that rest on the water's surface and block geese, ducks, swans, gulls, and other wildlife from entering bodies of water. The water becomes unattractive to the pest birds and wildlife — they simply don't recognize it as water. Bird Balls are weather-resistant, durable, long-lasting, and require minimal maintenance.

All floating cover options are made of 100% high-density polyethylene (HDPE). Food safe. Fully recyclable. A 10-year warranty against cracks and other wear is included.

PRODUCT BENEFITS

- ✓ Quick and simple to install
- ✓ Virtually maintenance-free
- ✓ Long-lasting
- ✓ Unaffected by rainwater, snow and frost
- ✓ Bird & wildlife control
- ✓ Odor control
- ✓ Algae control
- ✓ Heating cost reduced by up to 85%
- ✓ Decrease liquid loss through evaporation by up to 95%
- ✓ Reduce chemical consumption

Armor Ball AQUA

Covers up to 90% of water surface. Product duration 25 years.

HDPE

B-BALLS-ARM-B-AQ

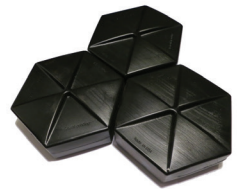


Hexprotect AQUA

Covers up to 99% of water surface. Product duration 20-25 years. Will not stack, roll, or blow in the wind. Product maintains coverage in open spaces with high wind exposure.

HDPE

B-BALLS-HT-AQ-CUS



Rhombo Hexoshield

Covers up to 99% of water surface. Product duration 20-25 years. Reduces evaporation up to 95%. Recommended in applications with tight fitting areas such as clarifiers, pools and water troughs.

HDPE

B-BALLS-RHC-B-AQ-CUS





Humane & Eco-friendly Solutions
Experienced Sales Consultants
Unmatched Quality
Worldwide Distribution
Industry-Leading Customer Service

CONTACT US

800-662-5021 or 312-226-2473
solutions@bird-x.com
www.bird-x.com

